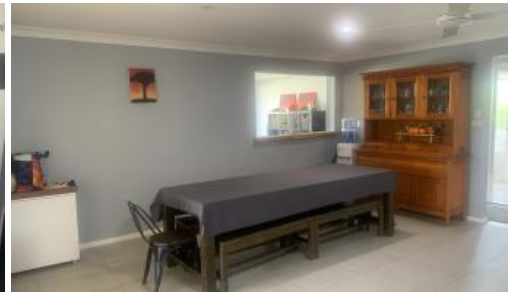


Sold



4 Mitchell Pl, Gunnedah



## Modern home in Quiet Cul-de-sac

This large modern home is sure to impress growing families who are seeking a spacious home in a pleasant location. Situated on a 678m<sup>2</sup> block is this modern established home in a quiet cul-de-sac location within walking distance to Gunnedah's Golf Course and walking tracks. The back yard is perfect for those who enjoy entertaining.

The home features:

- Open plan kitchen dining and main living
- Second living area & office space
- Four generous sized bedrooms with built-in wardrobes & spacious master bedroom with walk-in wardrobe and ensuite
- Large enclosed alfresco area perfect for entertaining
- Low maintenance yards
- Evaporative cooling throughout & ceiling fans in

🏠 4 🚗 2 🚙 1 📏 678 m<sup>2</sup>

|               |                       |
|---------------|-----------------------|
| Price         | SOLD for<br>\$450,000 |
| Property Type | Residential           |
| Property ID   | 992                   |
| Land Area     | 678 m <sup>2</sup>    |
| Floor Area    | 170 m <sup>2</sup>    |

### Agent Details

John Harford – 0408 607 880

### Office Details

Gunnedah  
100 Marquis St GUNNEDAH  
NSW 2380

02 6742 0077

bedrooms

- Single lock up garage with indoor access

Dont miss out on your chance to call this property your home, give our sales team a call today on 6742 6677 to book your inspection.

Rates: \$2400.00pa approx

DISCLAIMER: Whilst all care is taken with the information supplied no warranty is given and you must rely on your own enquiries.

The above information provided has been furnished to us by the vendor/s. We have not verified whether or not that information is accurate and do not have any belief in one way or the other in its accuracy. We do not accept any responsibility to any person for its accuracy and do no more than pass it on. All interested parties should make and rely upon their own inquiries in order to determine whether or not this information is in fact accurate.

02 6742 6677



**LAKEFORD**  
**REAL ESTATE**