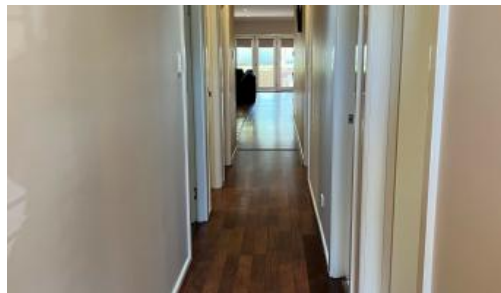




Unit 2, 20 Hinton Dr, Gunnedah



Large Two Bedroom Unit In Sought After Location

Situated in sought after Hinton Drive is this low maintenance two bedroom unit offering space that you would find in a home. Located just a short walk to schools, the golf course and walking tracks, providing a lifestyle of convenience.

Features we love about this unit:

- Enjoy the open plan kitchen living and dining area with stylish floating floorboards
- Large modern kitchen finished with gas cooking, dishwasher & ample cupboard space
- 2x split systems for heating & cooling
- Large internal laundry with plenty of storage & laundry tub
- Walk-in linen cupboard

🛏 2 🚿 2 🚗 1 📏 300 m2

| | |
|---------------|-----------------------|
| Price | SOLD for \$360,000 |
| Property Type | Residential |
| Property ID | 1088 |
| Land Area | 300 m2 |
| Floor Area | 136 m2 |

Agent Details

John Harford – 0408 607 880
Hayley West – 0492 801 494

Office Details

Gunnedah
100 Marquis St GUNNEDAH
NSW 2320

- 2x Spacious sized bedrooms with the main offering an ensuite & walk in wardrobe
- Outside you will find a well sized outdoor entertaining area that flows off the living and dining area + a small fully fenced yard
- Single garage with internal access
- This property is also an ideal investment opportunity with a current rent return of \$390.00pw.

Contact our sales team today to secure a private inspection.

DISCLAIMER: Whilst all care is taken with the information supplied no warranty is given and you must rely on your own enquiries.

The above information provided has been furnished to us by the vendor/s. We have not verified whether or not that information is accurate and do not have any belief in one way or the other in its accuracy. We do not accept any responsibility to any person for its accuracy and do no more than pass it on. All interested parties should make and rely upon their own inquiries in order to determine whether or not this information is in fact accurate.

NSW 2380

02 6742 6677



LAKEFORD
REAL ESTATE